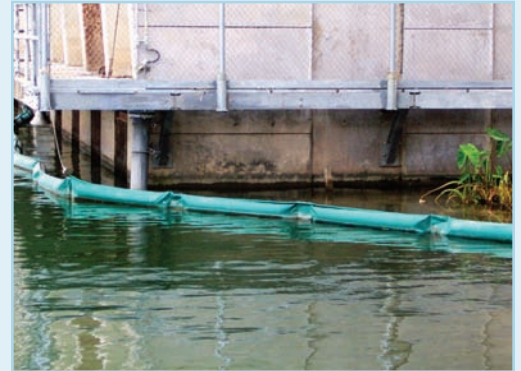


## Water Quality

Our nation's water bodies are cleaner today than they have been in decades, yet water quality issues and challenges still abound. Facilities of all kinds are challenged with simultaneously meeting water needs and preventing pollution (or even improving water quality in certain cases), while meeting ever-more-stringent regulations, conserving water and energy, and minimizing adverse environmental impacts.



Zephyr combines expertise in engineering, natural resources, and environmental science with knowledge of applicable regulatory and policy programs, and extensive experience with regulators. This background allows us to provide valuable consulting experience aimed at developing cost-effective, sustainable solutions to your water quality issues.

Zephyr can provide any of the following services related to water quality:

### WATER QUALITY PERMITTING

- Industrial and municipal wastewater discharge permitting (NPDES, TPDES, LPDES)
- Industrial and municipal wastewater discharge compliance evaluations
- Industrial pre-treatment permitting
- Discharge monitoring report (DMR) preparation and compliance recordkeeping
- Wetlands/Waters of the United States (CWA Section 404) evaluations and permitting
- Water quality certification filings associated with USACE wetland permit applications
- Wastewater stream evaluation and characterization

### WATER RESOURCES PLANNING AND MANAGEMENT

- Spill Prevention, Control and Countermeasures (SPCC) plan development and certification
- Facility Response Plans (FRPs)
- General Land Office (GLO) Discharge Prevention and Response Plans
- Water quality assessments
- Water and wastewater conservation program development
- Water reuse program development and compliance
- Potable water regulatory compliance
- Water use efficiency auditing

### STORM WATER PERMITTING AND MANAGEMENT

- Federal (NPDES) and state storm water permitting assistance (industrial and construction)
- Storm water pollution prevention plan (SWP3) development
- Storm water management program (SWMP) development (municipal)
- Storm water pollution prevention training

*Assisting clients worldwide with their EHS consulting, training, and data systems needs.*

